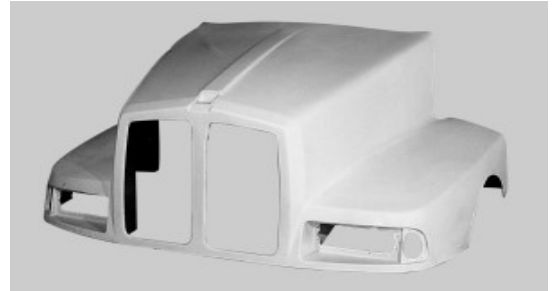


KENWORTH

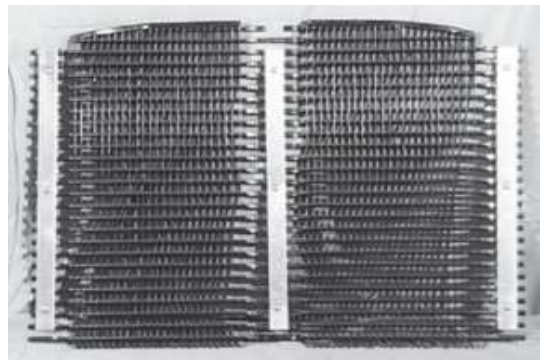
T600 II CURVED W/S 1990-1995

K0160C HOOD
LENGTH: 59" CENTERLINE
SHIPPING WEIGHT: 336 LBS.
YEAR: 1990 - 1995

- Split Grille
- **Curved windshield**



KH0160L Dual Square Headlamps Complete unit Left
KH0160R Dual Square Headlamps Complete unit Right
KG0160B,C,D GRILLE BLACK W/ DUMMY DENSER
KG0160B,C,D GRILLE BRITE ALUM W/ DUMMY DENSER
CHR



CAC Charge Air Cooler available, see list
K0360A-FS FAN SHROUD, UP TO 2002
K0360B-FS FAN SHROUD, 2002 AND UP
KMR0160LB-EDT Mirror Black LH. Main: Electric; Auxiliary: Manual. W/ Defrost, Mount Arm, Temp Sensor
KMR0160RB-ED Mirror Black RH. Main: Electric; Auxiliary: Manual. W/ Defrost, Mount Arm.
KMR0160LC-EDT Mirror Chrome LH. Main: Electric; Auxiliary: Manual. W/ Defrost, Mount Arm, Temp Sensor
KMR0160RC-ED Mirror Chrome RH. Main: Electric; Auxiliary: Manual. W/ Defrost, Mount Arm.



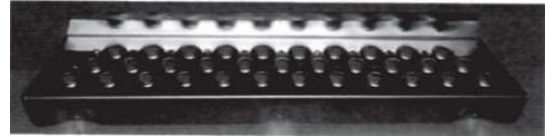
KENWORTH

K0165L T600 (except Aero) Tank Step Fiberglass Upper Section

K0165R T600 (except Aero) Tank Step Fiberglass Upper Section



K0166P-1 EARLY T600 LOWER STEP



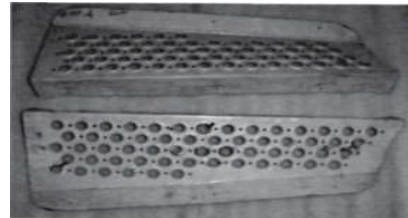
K0166L T600 (except Aero) Side Skirts (fiberglass)

K0166R T600 (except Aero) Side Skirts (fiberglass)



K0165PL-S T600A,B,C,TANK STEP LEFT

K0165PR-S T600A,B,C,TANK STEP RIGHT



KEN-R600F BUMPER COVER FIBERGLASS

KEN-R650 BUMPER COVER Flexible Composite Material



513 Light & Tow holes (optional) 17"

513N Tow holes (optional) 17"

